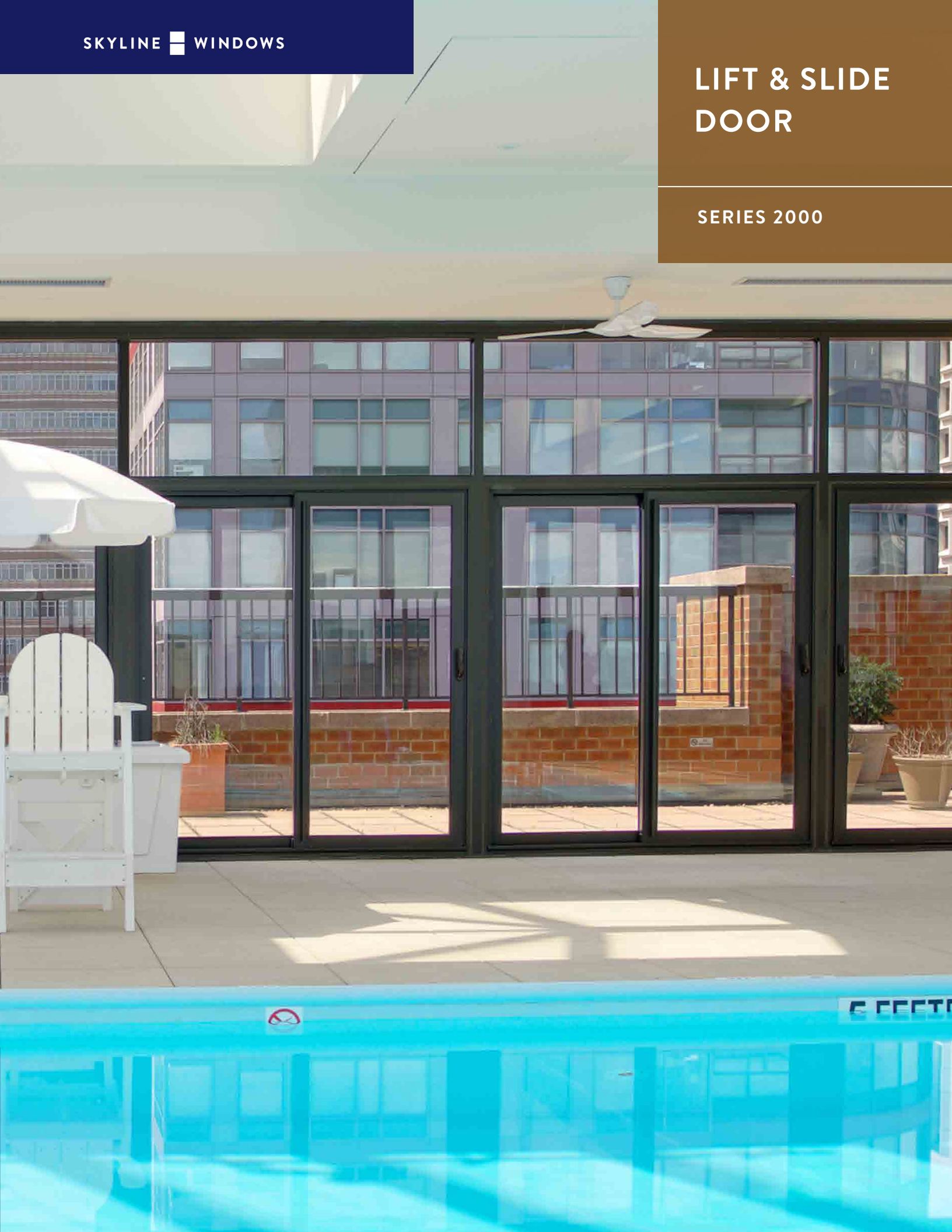


LIFT & SLIDE DOOR

SERIES 2000



The Skyline Series 2000 Lift & Slide Door is like no other sliding door on the market. The handle rotates 180 degrees, lifting the operable sash off the tracks to disengage the weatherstripping and allow for extremely low friction operation. This unique feature sets the Series 2000 apart from other competitors on the market.

See our website for more details:
www.skylinewindows.com

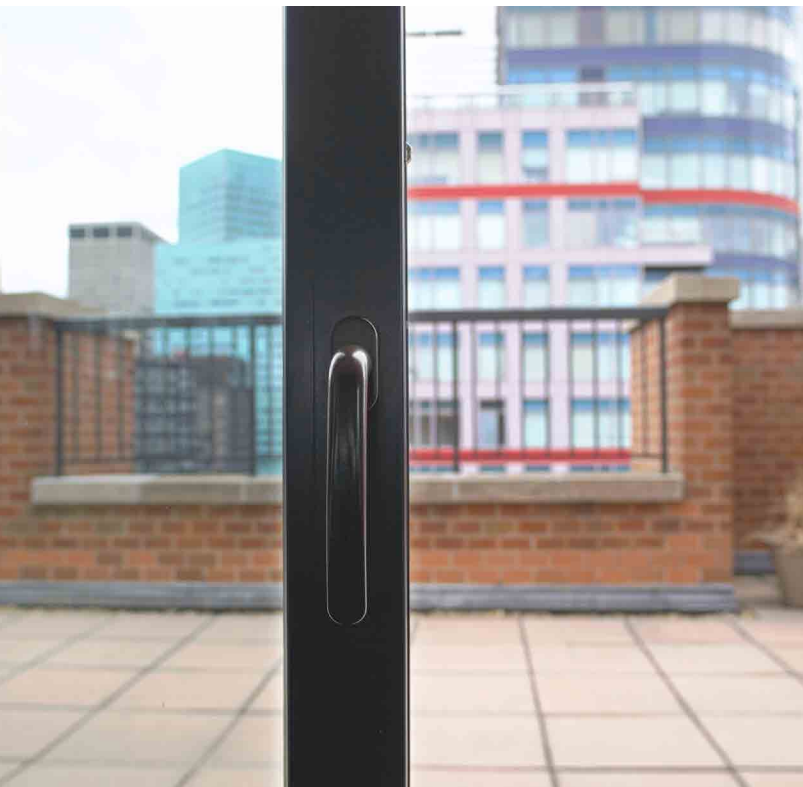
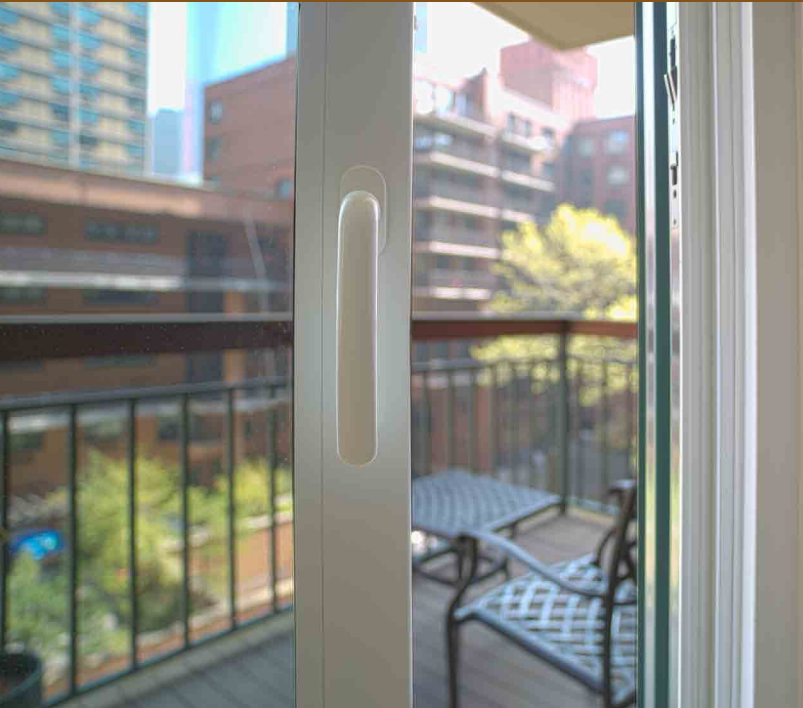
Employing multi-lock hardware, the handle controls multiple locking points and provides ease of operation combined with high performance and resistance to tampering. While most sliding doors typically use a friction seal, ours has a compression seal which allows the door to have a low sill while maintaining high sill performance.

Whether applied in a high-rise, townhouse, or suburban home, the Skyline Series 2000 Lift & Slide door will surely meet your expectations.



LIFT & SLIDE DOOR

SERIES 2000





4 FEET DEEP

SKYLINE  WINDOWS

220 EAST 138TH STREET
BRONX, NY 10451
(212) 491 3000
skylinewindows.com



FEATURES + OPTIONS

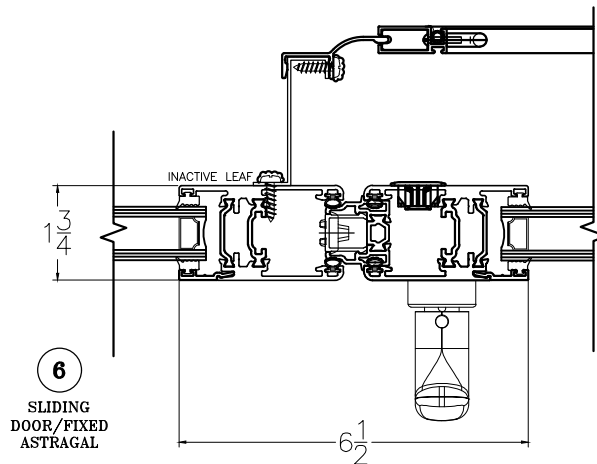
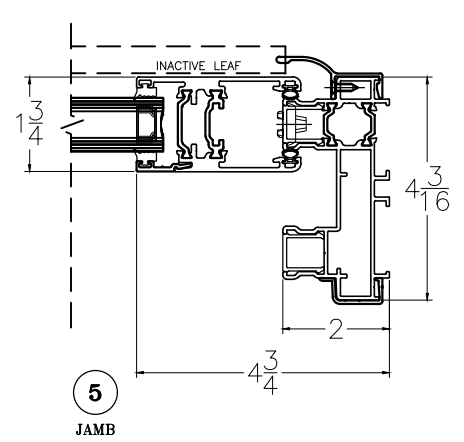
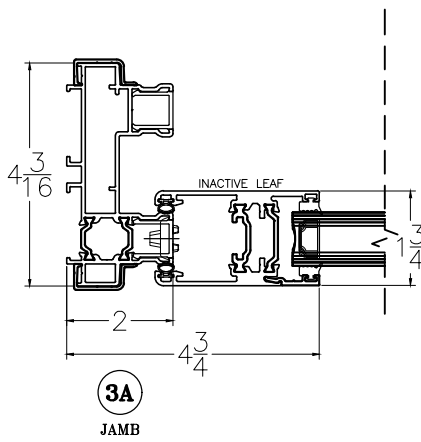
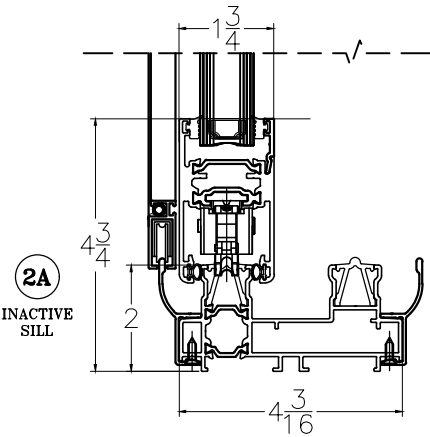
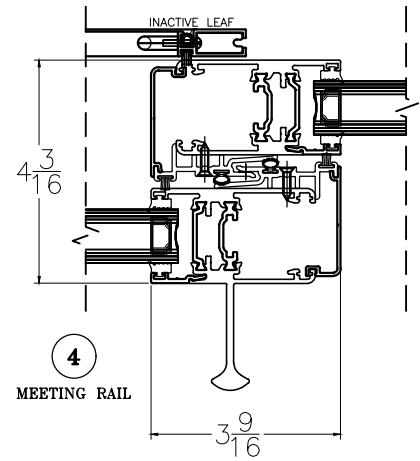
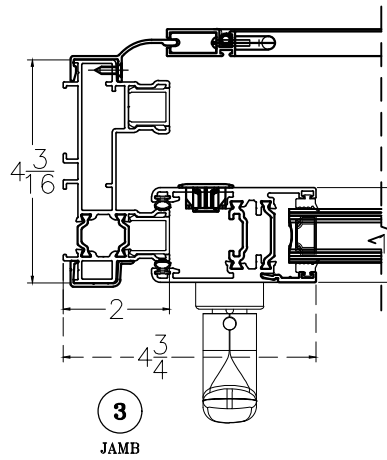
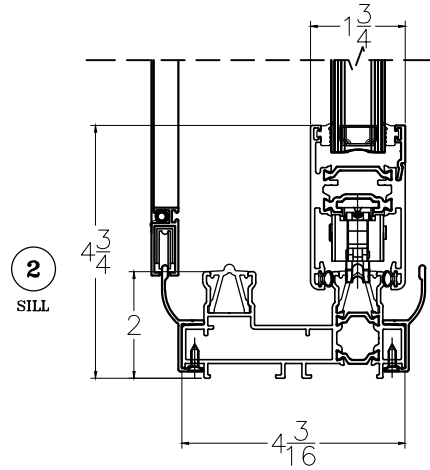
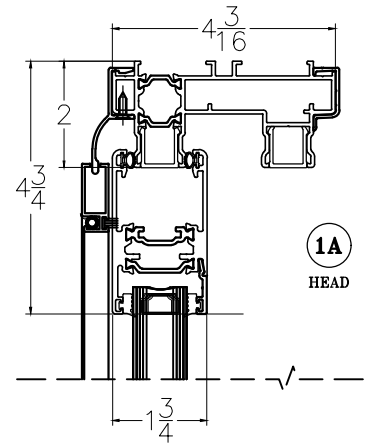
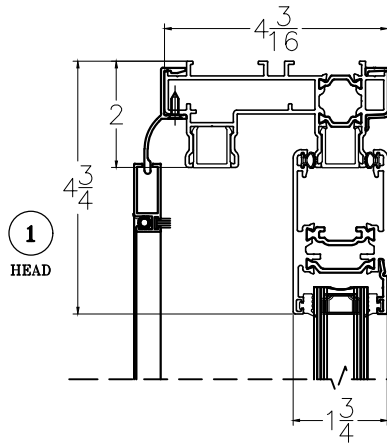
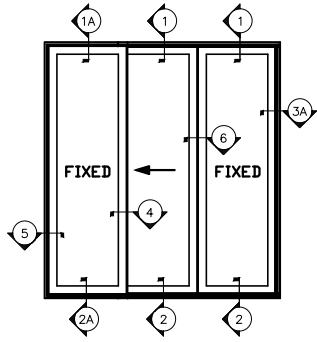
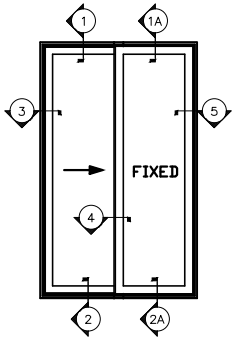
Skyline Series	2000
Maximum Size	10' x 8' Sash weight 550 lbs 3 leaf capacity
Standard Finishes	White Interior / Bronze Exterior Bronze Interior / Bronze Exterior
Glass	1" insulated
Screens	Full screens available
Notes	<ul style="list-style-type: none"> • Tandem rollers used on sashes exceeding 198 lbs • Unique T rex weeping system

PERFORMANCE AS SPECIFIED

Based on Independent Laboratory Testing

AAMA	AW-PG50
Uniform Structural Load	75 PSF
Air @ 50 MPH	.01 CFM
Water	10 PSF





NOT TO SCALE