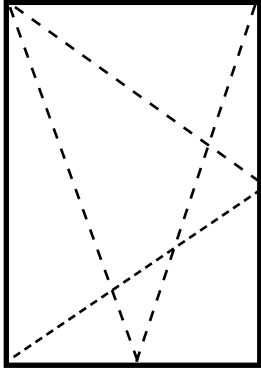


SKYLINE  WINDOWS

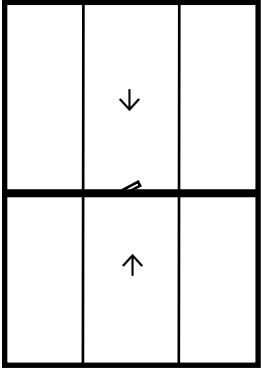
554 EIGHTH AVENUE



Situated in Manhattan’s bustling Midtown West, 554 8th Avenue is a 21-story pre-war building that has recently undergone an extensive revitalization both inside and out. The capital improvement initiative included a meticulous redesign of the lower floors’ facade, a new lobby, high-speed elevators, the implementation of open office layouts, outdoor terraces, and oversized window system upgrades.



NEW SKYLINE ALUMINUM TILT & TURN



OLD STEEL DOUBLE HUNG



Throughout the renovation process, Skyline Windows collaborated with the owner, Expansion Venture Capital, LLC, and Fogarty Finger Architecture firm. Together we selected window and terrace door products that would merge functionality with the project's new design aesthetics.

Ultimately, the Skyline Series 500 Dual Action window was chosen as the replacement of the building's original windows. In addition, Skyline's Series 1700 Inswing and Outswing Terrace Doors were chosen for the six outdoor terraces.

“With the proximity to Hudson Yards and the increased interest from technology companies in the midtown submarket, 554 On the Eighth is positioned as a premier, headquarter-style destination for the most innovative firms in the country,” as per Joshua Goldsmith, Colliers International's Director of Brokerage & Advisory Services

OWNER: Expansion Venture Capital, Inc. • ARCHITECT: Fogarty Finger Architecture

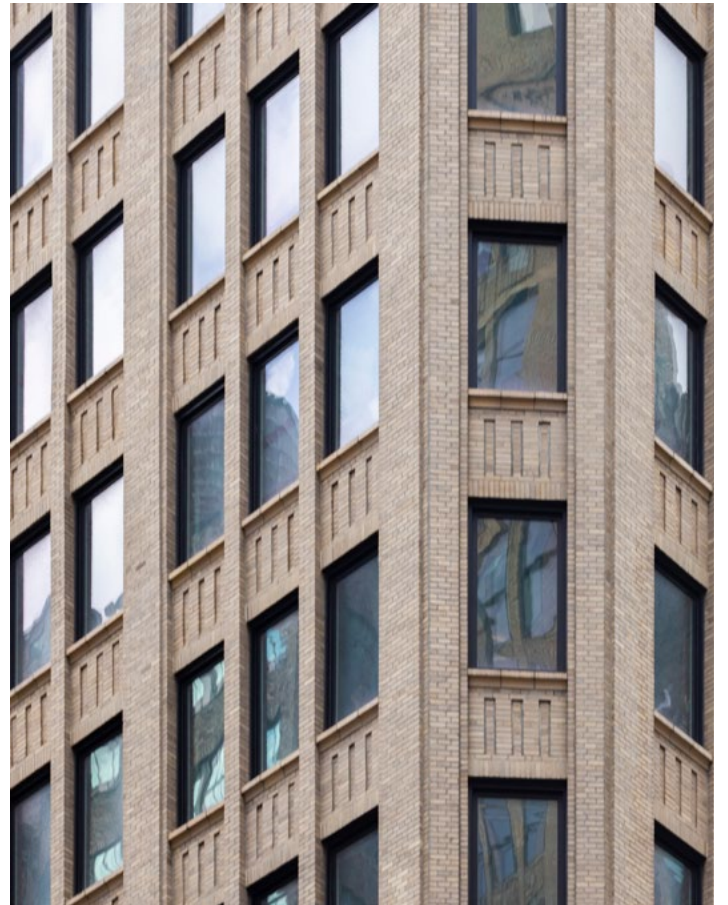
*Skyline Windows Product Series: Series 500 Dual Action Window • Series 1700 Inswing & Outswing Terrace Doors*





**BEFORE**

**AFTER**





SKYLINE  WINDOWS

[skylinewindows.com](http://skylinewindows.com) · 220 East 138th Street, Bronx, NY 10451 · 212-491-3000